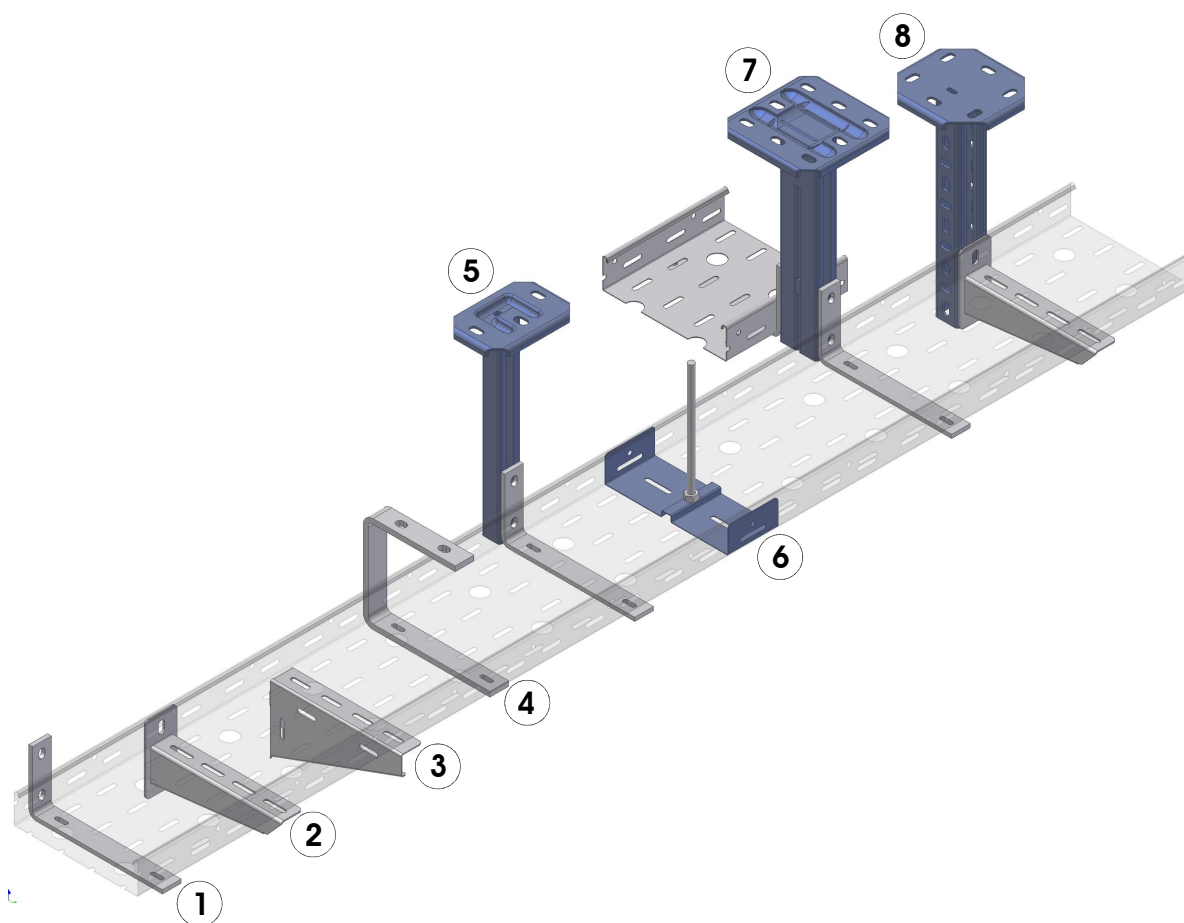

Nosilci in pribor

10/11

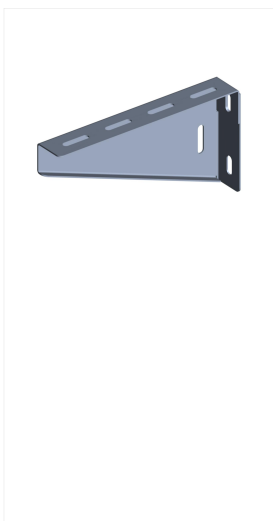
elba

Pregled in kazalo kabelskih polic:



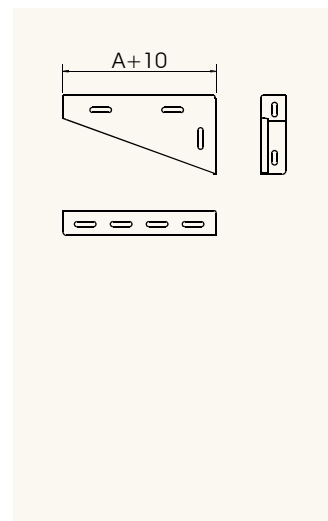
| Št. | Naziv | Stran |
|-----|-------------------------------------|-------|
| 1 | Stenski nosilec police - ZNL | 3 |
| 2 | Ojačan stenski nosilec police - ZNM | 3 |
| 3 | Stenski nosilec police - ZN | 3 |
| 4 | Stropni C nosilec police - SNU | 4 |
| 5 | Stropni nosilec - ESG | 4 |
| 6 | Obesni nosilec police - NON | 5 |
| 7 | Dvostranski stropni nosilec - DSG | 4 |
| 8 | Stropni nosilec - PNSZ | 5 |

Stenski nosilec police ZN



Kataloške številke in oznake:

| Širina police A: (mm) | Material - barva | | | | |
|--------------------------|---------------------|--------------------|---------------------|---------------------------|----------------------|
| | Pocinkana pločevina | Inox pločevina | Vročje cinkano | RAL 9010 | RAL po izbiri |
| 50 | 40052 ZN 50 | 41052 ZN 50 RF | 40052V ZN 50 TC | 4005212 ZN 50 RAL9010 | 40052X ZN 50 RAL |
| 100 | 40102 ZN 100 | 41102 ZN 100 RF | 40102V ZN 100 TC | 4010212 ZN 100 RAL9010 | 40102X ZN 100 RAL |
| 200 | 40202 ZN 200 | 41202 ZN 200 RF | 40202V ZN 200 TC | 041202 ZN 200 RAL9010 | 40202X ZN 200 RAL |
| 300 | 40302 ZN 300 | 41302 ZN 300 RF | 40302V ZN 300 TC | 403022 ZN 300 RAL9010 | 40302X ZN 300 RAL |
| 400 | 40402 ZN 400 | 41402 ZN 400 RF | 40402V ZN 400 TC | 404022 ZN 400 RAL9010 | 40402X ZN 400 RAL |

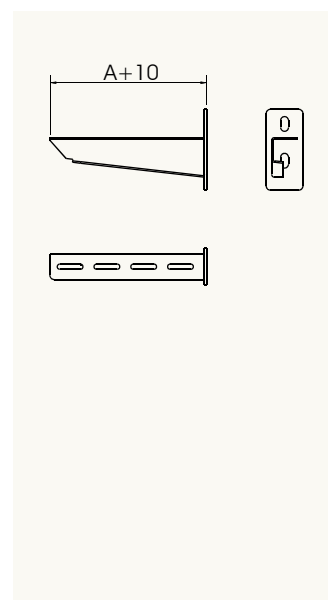


Ojačan stenski nosilec police ZNM



Kataloške številke in oznake:

| Širina police A: (mm) | Material - barva | | | | |
|--------------------------|---------------------|---------------------|----------------------|---------------------------|-----------------------|
| | Pocinkana pločevina | Inox pločevina | Vročje cinkano | RAL 9010 | RAL po izbiri |
| 100 | 40103 ZNM 100 | 41103 ZNM 100 RF | 40103V ZNM 100 TC | 401031 ZNM 100 RAL9010 | 40103X ZNM 100 RAL |
| 200 | 40203 ZNM 200 | 41203 ZNM 200 RF | 40203V ZNM 200 TC | 402031 ZNM 200 RAL9010 | 40203X ZNM 200 RAL |
| 300 | 40303 ZNM 300 | 41303 ZNM 300 RF | 40303V ZNM 300 TC | 403032 ZNM 300 RAL9010 | 40303X ZNM 300 RAL |
| 400 | 40403 ZNM 400 | 41403 ZNM 400 RF | 40403V ZNM 400 TC | 404031 ZNM 400 RAL9010 | 40403X ZNM 400 RAL |
| 500 | 40503 ZNM 500 | 41503 ZNM 500 RF | 40503V ZNM 500 TC | 405031 ZNM 500 RAL9010 | 40503X ZNM 500 RAL |
| 600 | 40603 ZNM 600 | 41603 ZNM 600 RF | 40603V ZNM 600 TC | 406031 ZNM 600 RAL9010 | 40603X ZNM 600 RAL |

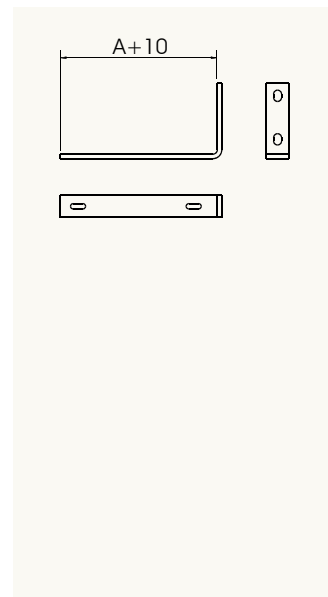


Stenski nosilec police ZNL



Kataloške številke in oznake:

| Širina police A: (mm) | Material - barva | | | |
|--------------------------|---------------------|----------------------|--------------------------|-----------------------|
| | Pocinkana pločevina | Vročje cinkano | RAL 9010 | RAL po izbiri |
| 50 | 45050 ZNL 50 | 45050V ZNL 50 TC | 450501 ZNL 50 RAL9010 | 45050X ZNL 50 RAL |
| 100 | 45100 ZNL 100 | 45100V ZNL 100 TC | 45101 ZNL 100 RAL9010 | 45100X ZNL 100 RAL |
| 200 | 45200 ZNL 200 | 45200V ZNL 200 TC | 45201 ZNL 200 RAL9010 | 45200X ZNL 200 RAL |
| 300 | 45300 ZNL 300 | 45300V ZNL 300 TC | 45301 ZNL 300 RAL9010 | 45300X ZNL 300 RAL |
| 400 | 45400 ZNL 400 | 45400V ZNL 400 TC | 45401 ZNL 400 RAL9010 | 45400X ZNL 400 RAL |
| 500 | 45500 ZNL 500 | 45500V ZNL 500 TC | 45501 ZNL 500 RAL9010 | 45500X ZNL 500 RAL |

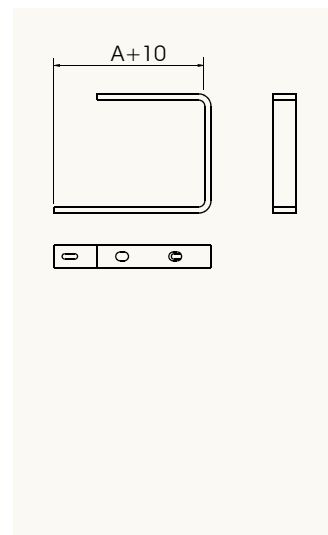


Stropni C nosilec police SNU

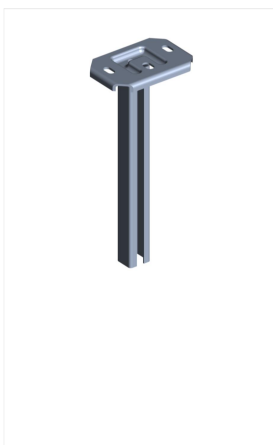


Kataloške številke in oznake:

| Širina police A: (Mm) | Material - barva | | | |
|--------------------------|---------------------|----------------------|---------------------------|-----------------------|
| | Pocinkana pločevina | Vročje cinkano | RAL 9010 | RAL po izbiri |
| 50 | 44050 SNU 50 | 44050V SNU 50 TC | 440501 SNU 50 RAL9010 | 44050X SNU 50 RAL |
| 100 | 44100 SNU 100 | 44100V SNU 100 TC | 441001 SNU 100 RAL9010 | 44100X SNU 100 RAL |
| 200 | 44200 SNU 200 | 44200V SNU 200 TC | 442001 SNU 200 RAL9010 | 44200X SNU 200 RAL |
| 300 | 44300 SNU 300 | 44300V SNU 300 TC | 443001 SNU 300 RAL9010 | 44300X SNU 300 RAL |
| 400 | 44400 SNU 400 | 44400V SNU 400 TC | 444001 SNU 400 RAL9010 | 44400X SNU 400 RAL |



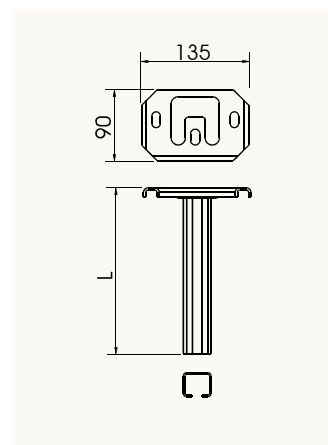
Stropni nosilec ESG



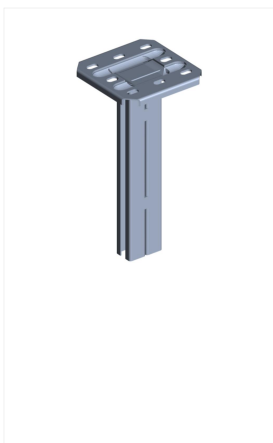
Kataloške številke in oznake:

| Dolžina nosilca L: (mm) | Material - barva | | | | |
|----------------------------|---------------------|---------------------|----------------------|---------------------------|-----------------------|
| | Pocinkana pločevina | Inox pločevina | Vročje cinkano | RAL 9010 | RAL po izbiri |
| 300 | 43004 ESG 300 | 43104 ESG 300 RF | 43004V ESG 300 TC | 430041 ESG 300 RAL9010 | 43004X ESG 300 RAL |
| 500 | 44704 ESG 500 | 44714 ESG 500 RF | 44704V ESG 500 TC | 447001 ESG 500 RAL9010 | 44704X ESG 500 RAL |
| 800 | 48004 ESG 800 | 48014 ESG 800 RF | 48004V ESG 800 TC | 480043 ESG 800 RAL9010 | 48004X ESG 800 RAL |

Opomba: Po dogovoru izdelamo tudi stropne nosilce ESG drugih dimenzij (npr. L=1200).
Stropni nosilec ESG po naročilu: ESG 411XX.



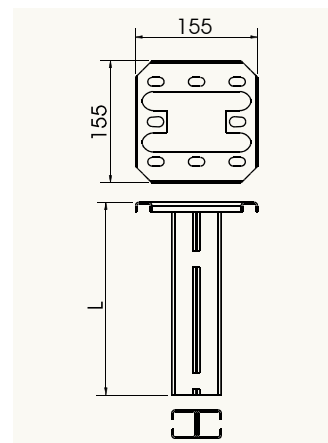
Dvostranski stropni nosilec DSG



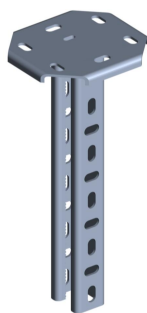
Kataloške številke in oznake:

| Dolžina nosilca L: (mm) | Material - barva | | | | |
|----------------------------|---------------------|---------------------|----------------------|---------------------------|-----------------------|
| | Pocinkana pločevina | Inox Pločevina | Vročje cinkano | RAL 9010 | RAL po izbiri |
| 300 | 43003 DSG 300 | 43103 DSG 300 RF | 43003V DSG 300 TC | 430031 DSG 300 RAL9010 | 43003X DSG 300 RAL |
| 500 | 45003 DSG500 | 45103 DSG 500 RF | 45003V DSG 500 TC | 450031 DSG 500 RAL9010 | 45003X DSG 500 RAL |
| 800 | 48003 DSG 800 | 48103 DSG 800 RF | 48003V DSG 800 TC | 480031 DSG 800 RAL9010 | 48003X DSG 800 RAL |

Opomba: Po dogovoru izdelamo tudi stropne nosilce DSG drugih dimenzij (npr. L=1200).
Stropni nosilec DSG po naročilu: DSG 421XX



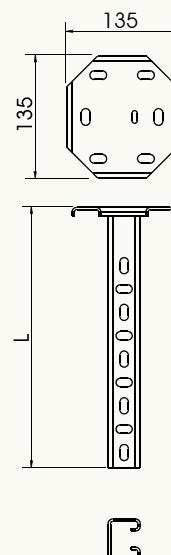
Stropni nosilec PNSZ



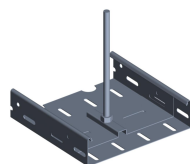
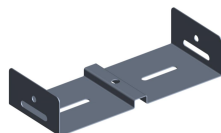
Kataloške številke in oznake:

| Dolžina nosilca L: (mm) | Material - barva | | | |
|----------------------------|-----------------------|---------------------------|-------------------------------|----------------------------|
| | Pocinkana pločevina | Vročje cinkano | RAL 9010 | RAL po izbiri |
| 300 | 43007N PNSZ 300 | 43007NV PNSZ 300 TC | 43007NI PNSZ 300RAL9010 | 43007NX PNSZ 300 RAL |
| 400 | 44007N PNSZ 400 | 44007NV PNSZ 400 TC | 44007NI PNSZ 400RAL9010 | 44007NX PNSZ 400 RAL |
| 500 | 45007N PNSZ 500 | 45007NV PNSZ 500 TC | 45007NI PNSZ 500RAL9010 | 45007NX PNSZ 500 RAL |
| 600 | 46007N PNSZ 600 | 46007NV PNSZ 600 TC | 46007NI PNSZ 600RAL9010 | 46007NX PNSZ 600 RAL |
| 700 | 47007N PNSZ 700 | 47007NV PNSZ 700 TC | 47007NI PNSZ 700RAL9010 | 47007NX PNSZ 700 RAL |
| 800 | 48007N PNSZ 800 | 48007NV PNSZ 800 TC | 48007NI PNSZ 800RAL9010 | 48007NX PNSZ 800 RAL |
| 1000 | 4210001N PNSZ 1000 | 4210001NV PNSZ 1000 TC | 4210001NI PNSZ 1000RAL9010 | 4210001NX PNSZ 1000 RAL |

Opomba: Po dogovoru izdelamo tudi stropne nosilce PNSZ drugih dimenzij (npr. L=1200).
Stropni nosilec PNSZ po naročilu: PNSZ 422XX

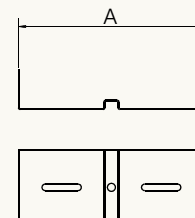


Obesni nosilec police NON

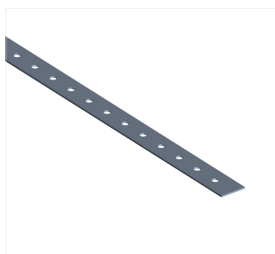


Kataloške številke in oznake:

| Širina in višina police: A/H (mm) | Material - barva | | | | |
|--------------------------------------|----------------------|------------------------|--------------------------|------------------------------|---------------------------|
| | Pocinkana Pločevina | Inox pločevina | Vročje cinkano | RAL 9010 | RAL po izbiri |
| 50/30 | 40054 NON 50/30 | 400514 NON 50/30 RF | 40054V NON 50/30 TC | 400541 NON 50/30RAL9010 | 40054X NON 50/30 RAL |
| 100/50 | 70104 NON 100/50 | 71104 NON 100/50 RF | 70104V NON 100/50 TC | 701041 NON 100/50RAL9010 | 70104X NON 100/50 RAL |
| 100/60 | 40104 NON 100/60 | 41104 NON 100/60 RF | 40104V NON 100/60 TC | 401041 NON 100/60RAL9010 | 40104X NON 100/60 RAL |
| 200/50 | 702042 NON 200/50 | 71204 NON 200/50 RF | 702042V NON 200/50 TC | 7020421 NON 200/50RAL9010 | 702042X NON 200/50 RAL |
| 200/60 | 40204 NON 200/60 | 41204 NON 200/60 RF | 40204V NON 200/60 TC | 402041 NON 200/60RAL9010 | 40204X NON 200/60 RAL |
| 300/50 | 70304 NON 300/50 | 71304 NON 300/50 RF | 70304V NON 300/50 TC | 703041 NON 300/50RAL9010 | 70304X NON 300/50 RAL |
| 300/60 | 40304 NON 300/60 | 41304 NON 300/60 RF | 40304V NON 300/60 TC | 403041 NON 300/60RAL9010 | 40304X NON 300/60 RAL |



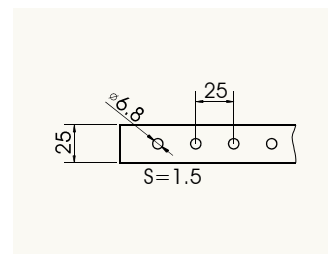
Perforiran trak PT



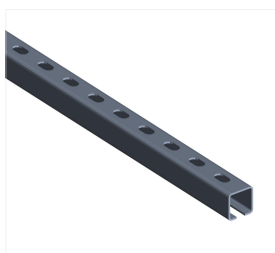
Kataloške številke in oznake:

Material - barva

| Perforiran trak: | Pocinkana pločevina | Inox pločevina | Vročje cinkano | RAL 9010 | RAL po izbiri |
|---------------------|---------------------|------------------|------------------|-----------------------|-------------------|
| PT L=2000 | 400251 PT | 4002151 PT RF | 400251V PT TC | 4002511 PT RAL9010 | 400251X PT RAL |



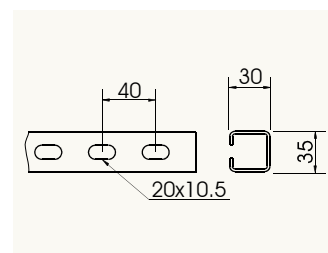
Perforiran C profil PCP



Kataloške številke in oznake:

Material - barva

| Perforiran C profil: | Pocinkana pločevina | Inox pločevina | Vročje cinkano | RAL 9010 | RAL Po izbiri |
|----------------------|---------------------|-----------------|------------------|------------------------|-------------------|
| PCP L=2500 | 49000 PCP | 49100 PCP RF | 49000V PCP TC | 4900011 PCP RAL9010 | 49000X PCP RAL |



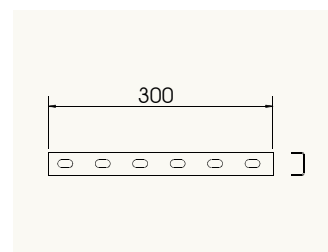
Spojnica perforiranega C profila SUCP



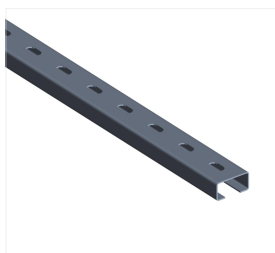
Kataloške številke in oznake:

Material - barva

| Spojnica C profila: | Pocinkana pločevina | Inox pločevina | Vročje cinkano | RAL 9010 | RAL po izbiri |
|----------------------|---------------------|------------------|-------------------|------------------------|--------------------|
| SUCP L=300 | 49400 SUCP | 49410 SUCR RF | 49400V SUCP TC | 494001 SUCP RAL9010 | 49400X SUCP RAL |



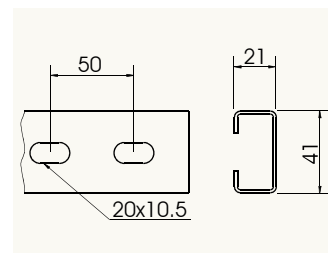
Perforiran "cady" profil LDE



Kataloške številke in oznake:

Material - barva

| CADY profil: | Pocinkana pločevina | Inox pločevina | Vročje cinkano | RAL 9010 | RAL po izbiri |
|----------------------|---------------------|---------------------|-------------------|------------------------|--------------------|
| LDE L=2500 | 421412 LDE | 421412 RF LDE RF | 421412V LDE TC | 4214121 LDE RAL9010 | 421412X LDE RAL |



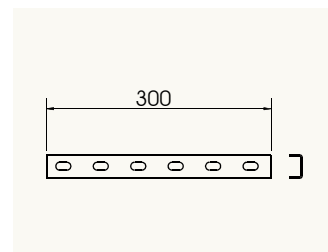
Spojnica "cady" profila LAE



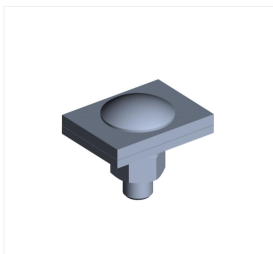
Kataloške številke in oznake:

Material - barva

| Spojnica C profila: | Pocinkana pločevina | Inox pločevina | Vročje cinkano | RAL 9010 | RAL po izbiri |
|---------------------|---------------------|---------------------|-------------------|------------------------|--------------------|
| LAE L=300 | 431214 LAE | 431214 RF LAE RF | 431214V LAE TC | 4312141 LAE RAL9010 | 431214X LAE RAL |



Pritrdilni pribor za nosilec pnsz PNSZ-1

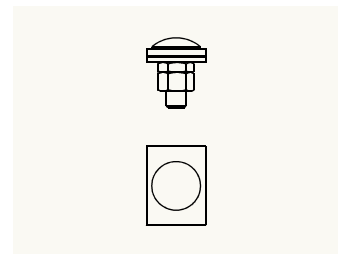


Kataloške številke in oznake:

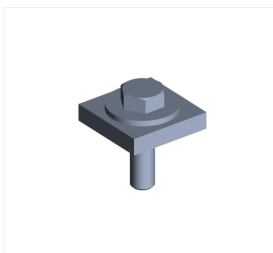
Material

| Pritrdilni pribor: | Pocinkana pločevina | Inox Pločevina |
|--------------------|---------------------|-----------------------|
| PNSZ-1 | 40801N PNSZ-1 | 40801NRF PNSZ-1 RF |

(Vijak M10x30 DIN 603 + 2 ploščici + 2 matici)



Pritrdilni pribor za nosilce esg in dsg PPN-1

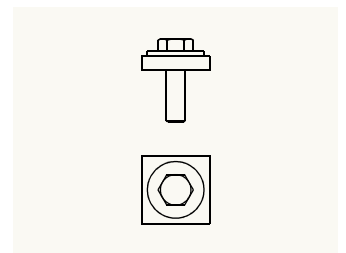


Kataloške številke in oznake:

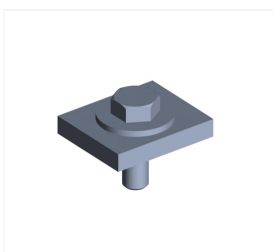
Material

| Pritrdilni pribor: | Pocinkana pločevina | Inox pločevina |
|--------------------|---------------------|-------------------|
| PPN-1 | 40801 PPN-1 | 40811 PPN-1 RF |

(Vijak M8x25 DIN 933 + navojna ploščica + podložka 8 DIN 9021)



Pritrdilni pribor za "cady" profil PPLDE

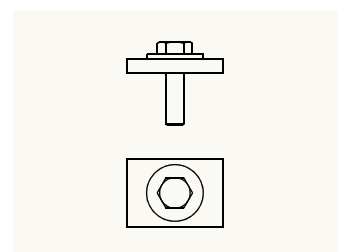


Kataloške številke in oznake:

Material

| Pritrdilni pribor: | Pocinkana pločevina | Inox pločevina |
|--------------------|---------------------|---------------------|
| PPLDE | 40802 PPLDE | 40802RF PPLDE RF |

(Vijak M8x25 DIN 933 + navojna ploščica + podložka 8 DIN 9021)



sedež

Elba Novo mesto, d.o.o.
Podbevškova ulica 40
8000 Novo mesto
Slovenija

tel.: +386 (0)7 39 32 600
fax: +386 (0)7 39 32 610

www.elba.si | info@elba.si

prodaja

Elba Novo mesto, d.o.o.
Koprska ulica 108a
1000 Ljubljana
Slovenija

tel.: +386 (0)1 24 25 350
fax: +386 (0)1 24 25 360

www.elba.si | info@elba.si